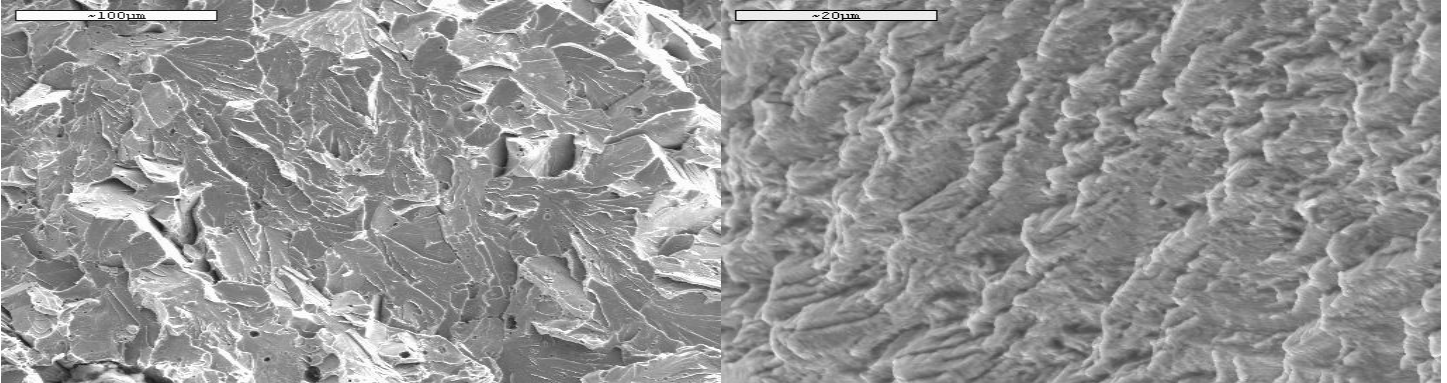


***Defense - Automotive - Commercial - Industrial***



**E & E Manufacturing Company**  
**Welding Engineering & Metallurgical Engineering**



***Product & Process Development - Failure Analysis - Testing Services***

# E & E Manufacturing Company

## Welding Engineering & Metallurgical Engineering

E&E Manufacturing's engineering and testing services laboratory is operated by educated and experienced personnel using the latest high tech equipment available in the areas of metallurgical and welding engineering. Let us assist you with your engineering and testing requirements.

### Metallography & Mechanical Testing

- Optical Microscopy and Image Analysis
- Scanning Electron Microscope
- Micro-hardness Testing
- Weld Measurement and Analysis
- Macroetching
- Photomacrography
- Rockwell Testing
- Brinell Testing
- Tensile Testing
- Component Testing
- Failure Analysis
- Optical and Electron Fractography



### In House NDT Capabilities ASNT compliance

- MT- Magnetic Particle
- PT-Liquid Penetrant
- UT-Ultrasonic

### AWS/OEM/EN/ISO Expertise In:

- |            |                   |              |
|------------|-------------------|--------------|
| •AWS D1.1  | •AWS D15.1        | •Textron     |
| •AWS D1.2  | •AWS D17.1        | •TACOM       |
| •AWS D1.3  | •BAE              | •EN 1418     |
| •AWS D1.6  | •Boeing           | •ISO 15609-1 |
| •AWS D1.9  | •General Dynamics | •ISO 3834-2  |
| •AWS D14.1 | •AM General       | •ISO 15613   |

### Specialized Equipment

- CMM
- 3D Laser Scanner
- RS Technologies Torque Tension System
- SLA 3D Printer
- Residual Stress Measurement

### Welding Engineering

- Welding Supplier Auditing
- Development of Weld Procedures & Qualifications
- Welder Training Services
- Weld Repair
- Weld Quality Analysis
- Expert Witness



E & E Manufacturing Company  
734-451-7600  
300/400 Industrial Drive  
Plymouth, MI 48170  
[www.eemfg.com](http://www.eemfg.com)

